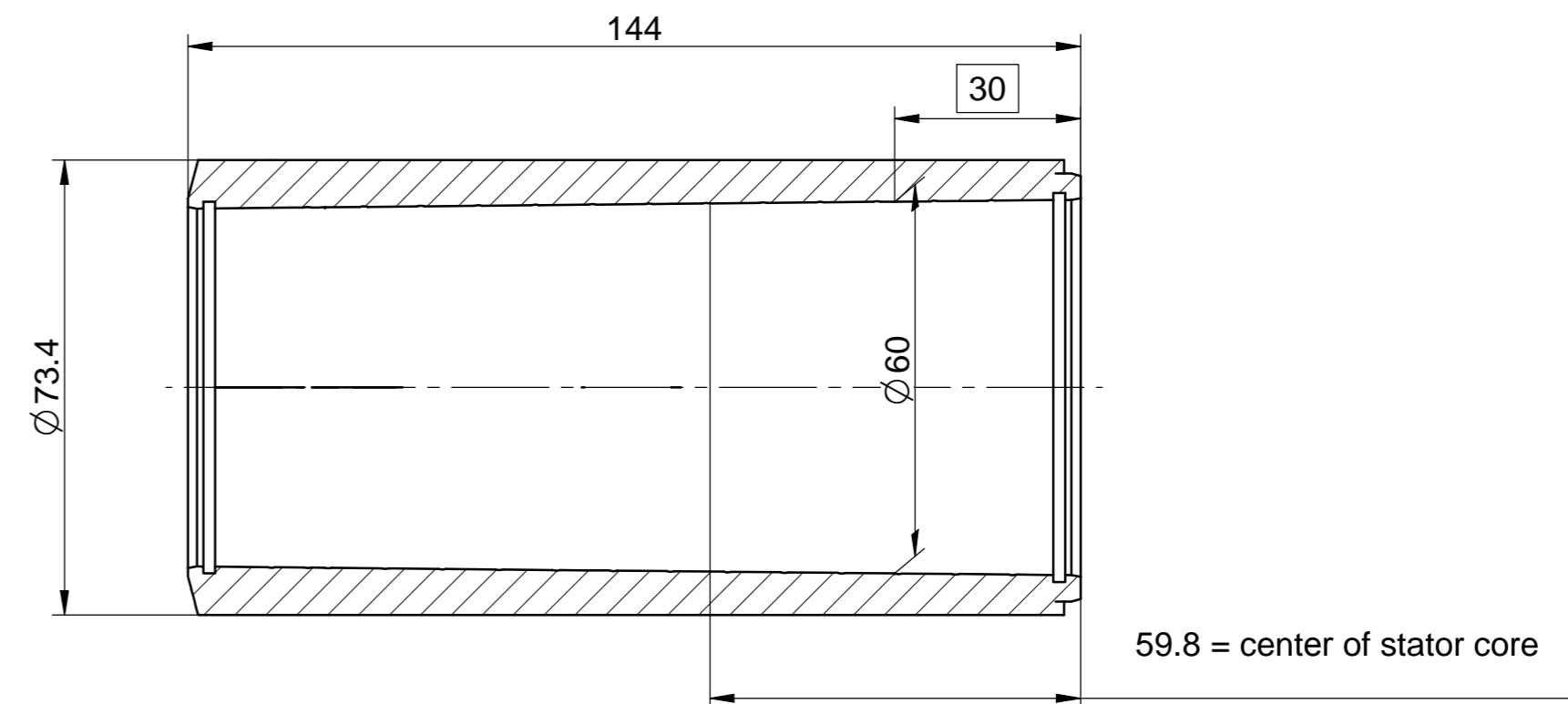
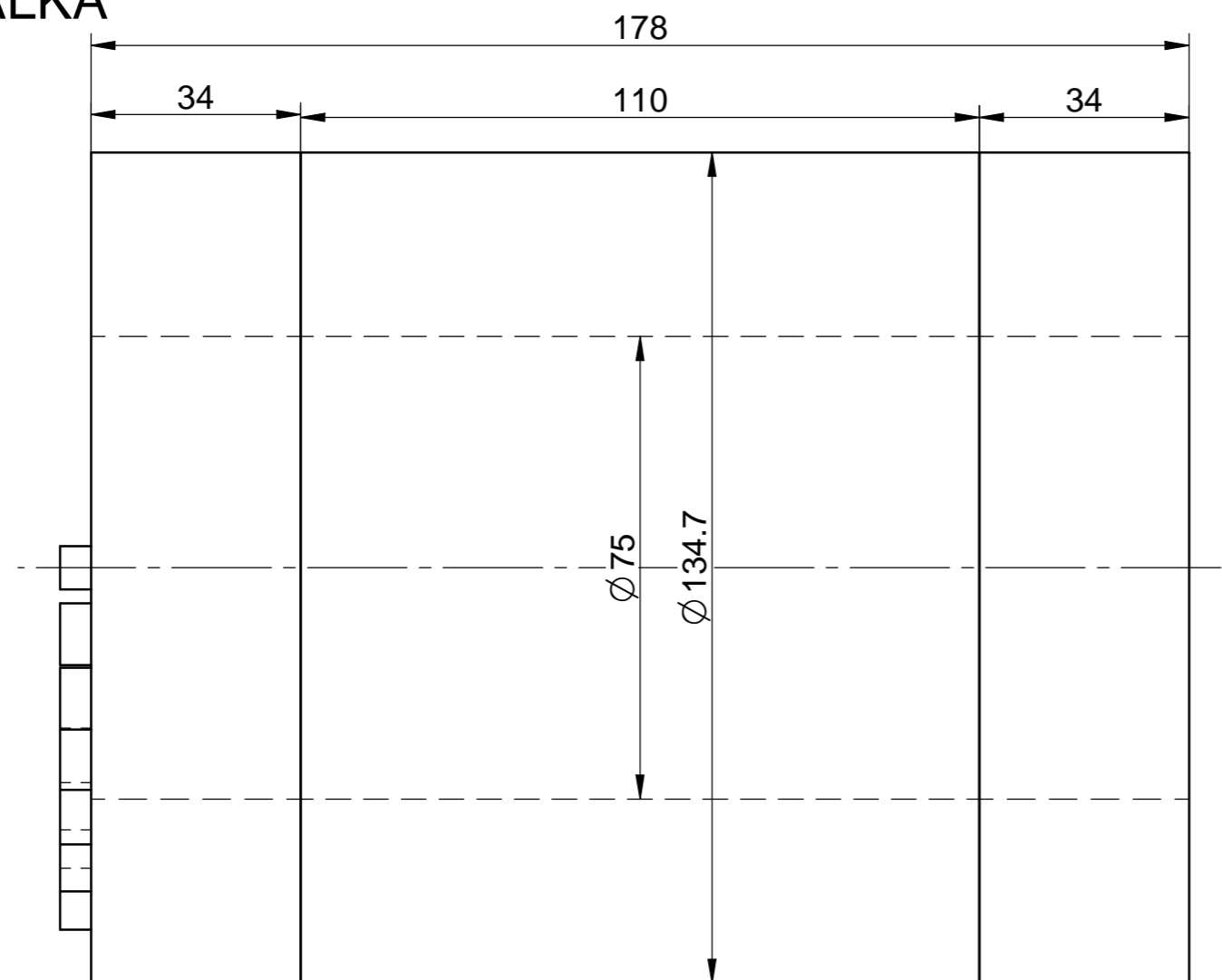


# Motors for Turbo-Compressors & Generators

120kW 60,000 RPM

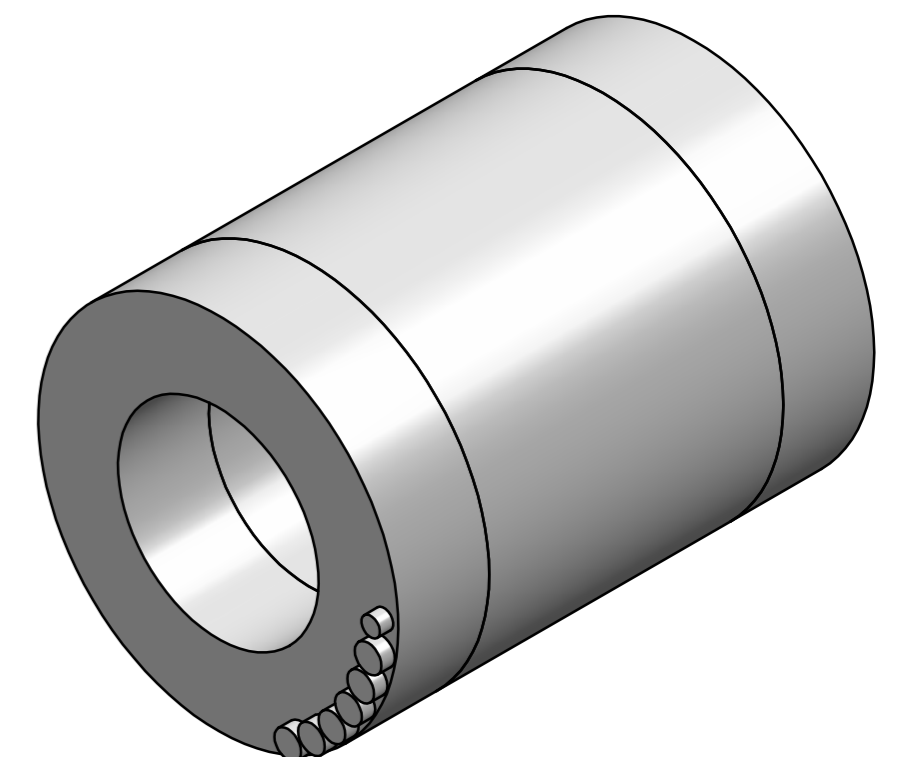
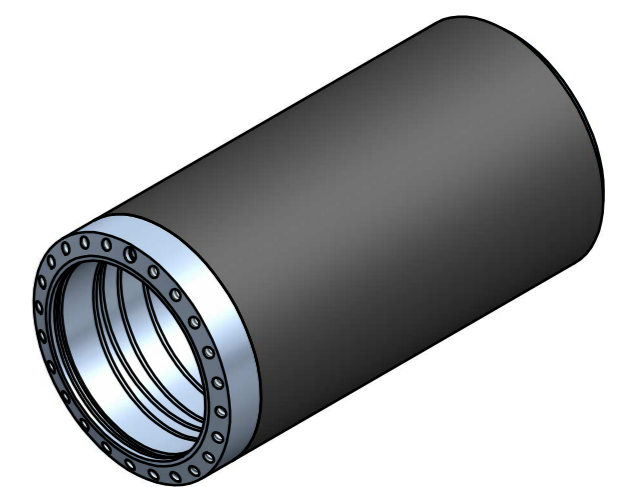
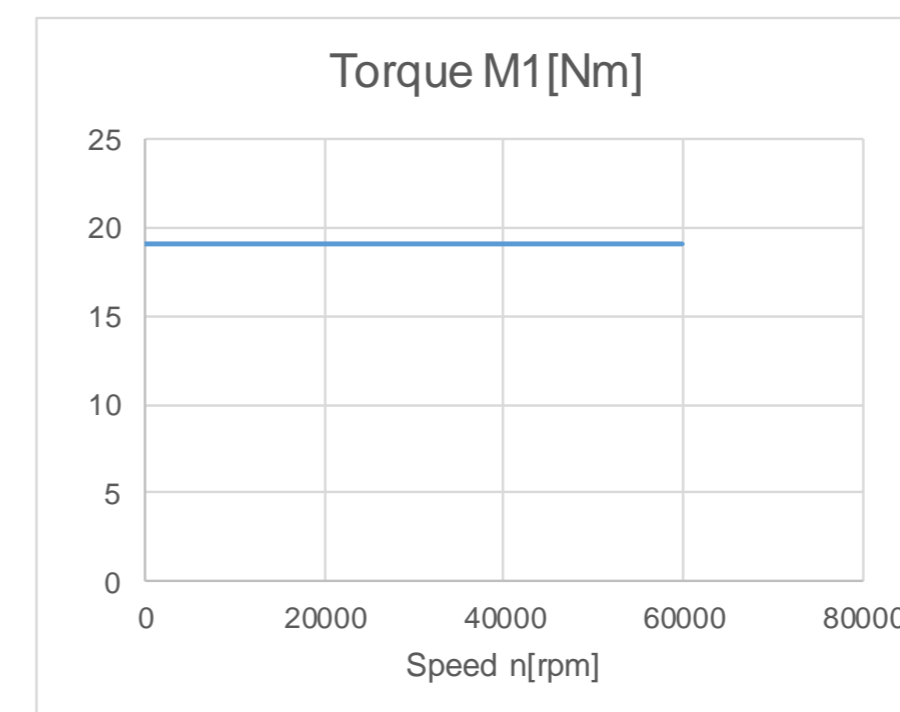
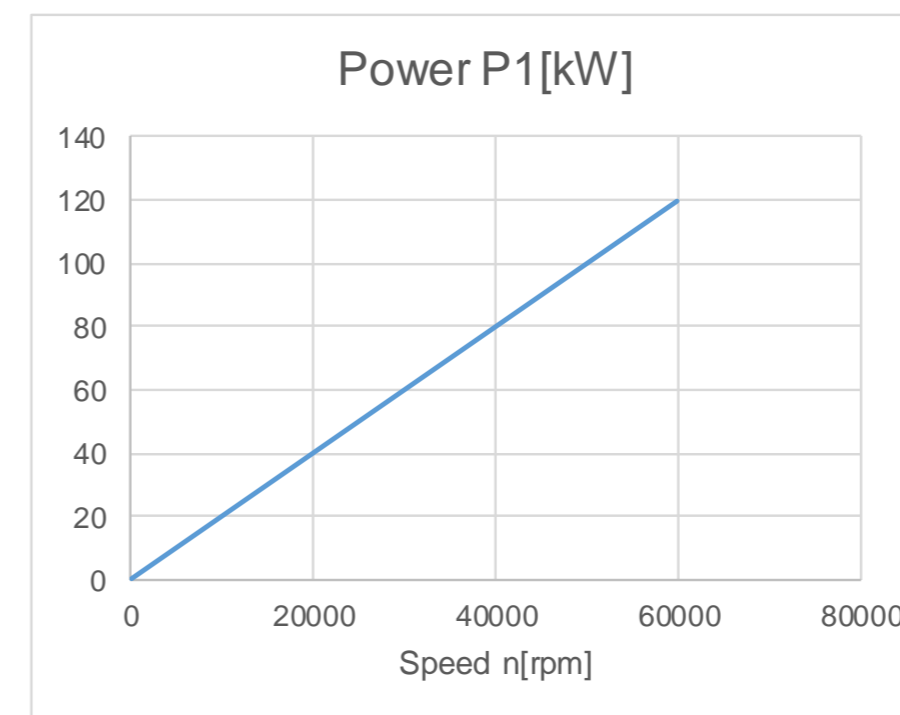
mSpW 13.5/11-4-ALKA



dimensions in mm

| Specifications |    |        |      |
|----------------|----|--------|------|
| Speed          | n  | 60,000 | rpm  |
| Frequency      | f1 | 2,000  | Hz   |
| Power          | P1 | 120    | kW   |
| Voltage        | U1 | 440    | Vrms |
| Current        | I1 | 188    | Arms |

## S1 Continuous Power and Torque



### Notes:

Optional VPI winding V for refrigerant cooling (compatible with R134a and R245)