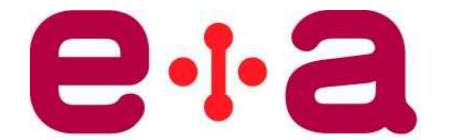


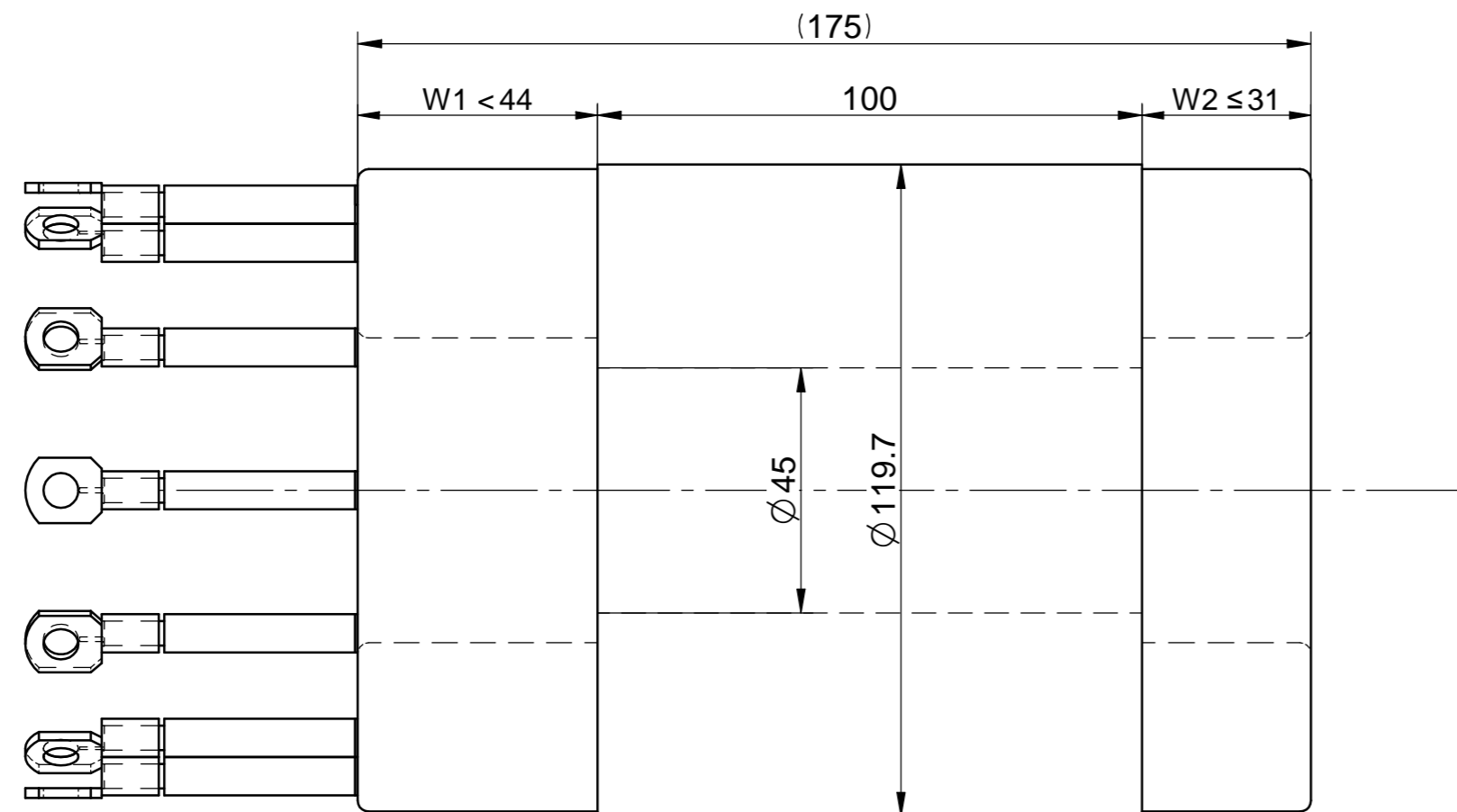
Rotors & Stators for Turbo-Compressors and Generators

80 kW 95,000 - 110,000 RPM

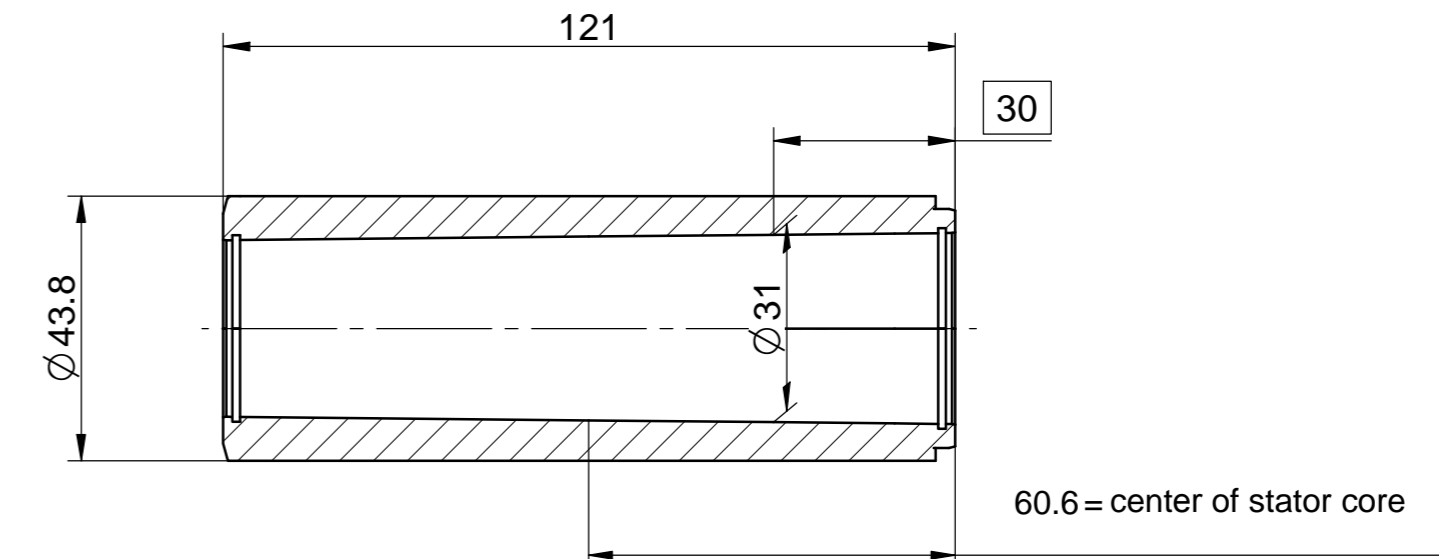
mSpW12/10-4-VPI



Elektromaschinen
und Antriebe

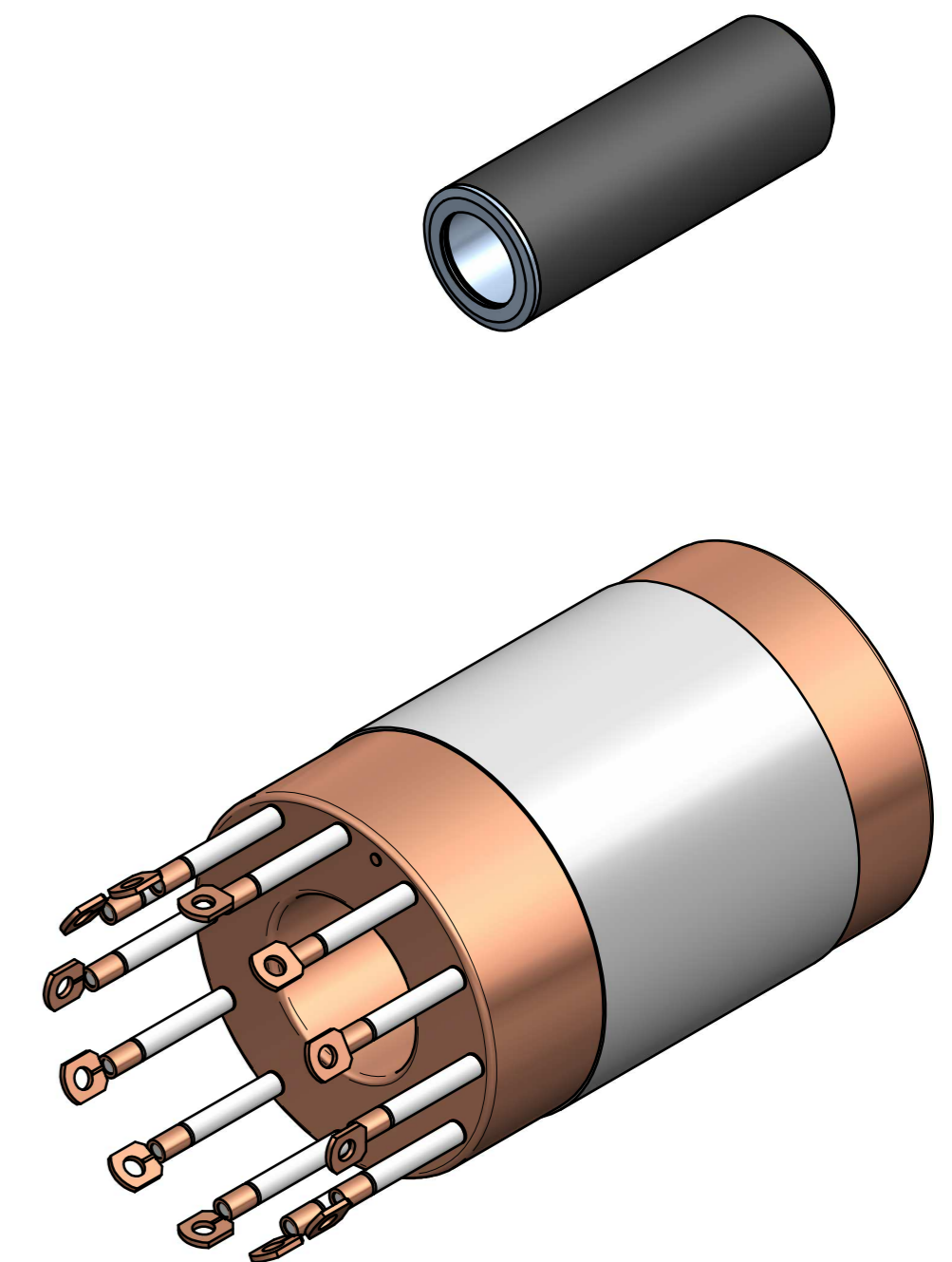
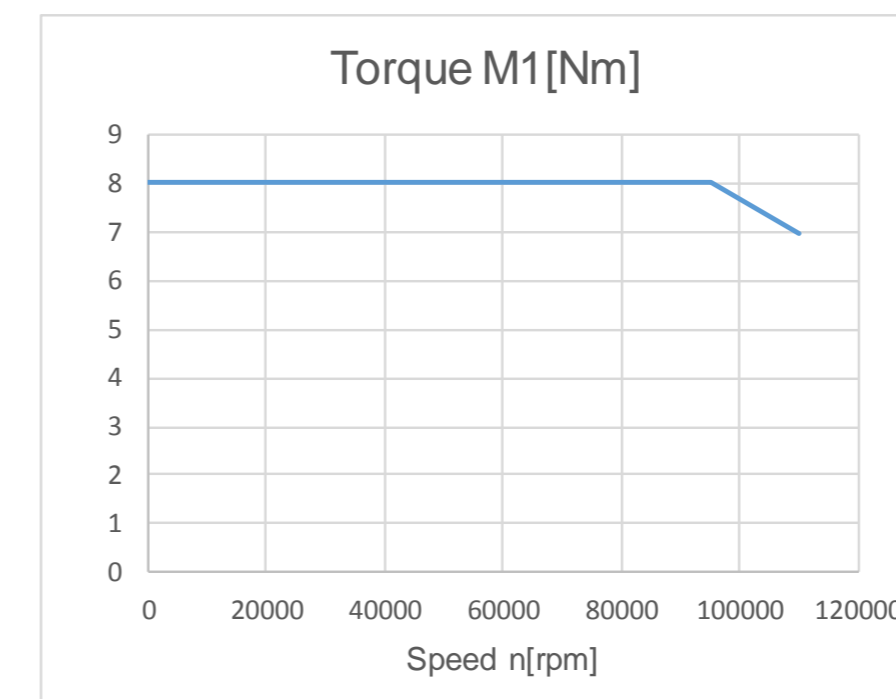
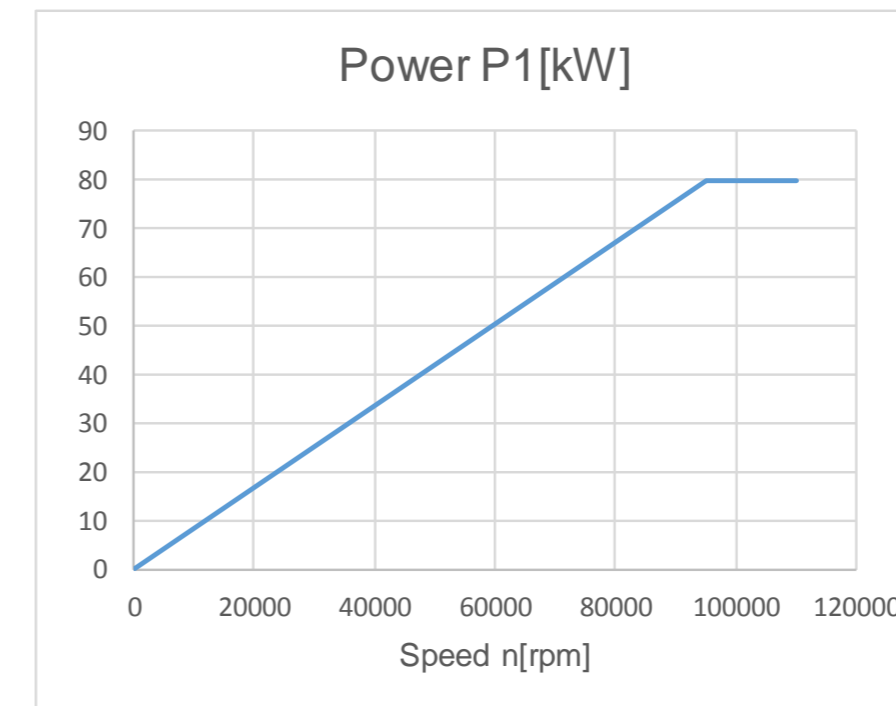


dimensions in mm



S1 Continuous Power & Torque

Specifications				
Speed	n	95,000	110,000	rpm
Frequency	f1	3,167	3,667	Hz
Power	P1	80	80	kW
Voltage	U1	170	185	Vrms
Current	I1	350	300	Arms



Notes:

- 4-pole stator and PM-rotor set
- VPI end windings support refrigerant cooling
- Optional ALKA version & cooling jacket for effective liquid cooling
- Efficiency with sinusoidal current supply > 96%
- H-class insulation system for winding temperatures up to 180 °C (356 °F)
- type and number of temperature probes: customer specified
- cable outlet configuration: customer specified
- PM-rotor with tapered ID and carbon fiber retaining sleeve
- rotor mounted by pushing onto tapered shaft
- maximum structural rotor speed Nmax = 121,000 RPM
- suitable for motor and generator applications